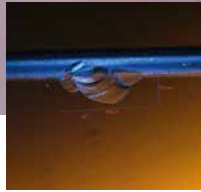




**Advanced Scratch
Detection
up to 15 kLux**



Avoid Claims – Increase Quality

Flat Panel Master (FPM) Product Line

Ultimate TFT / LCD BARE Glass Inspection

ISRA
VISION

High Quality with Turn-key Inspection Solution for Display Glass

Profitable. Precise. Complete

Avoid claims. Increase competitiveness. 100% Inspection In-Line

Using special high-end cameras, progressive frame grabber, and high power white light illumination, combined with sophisticated detection and evaluation software allow for superior inspection results.

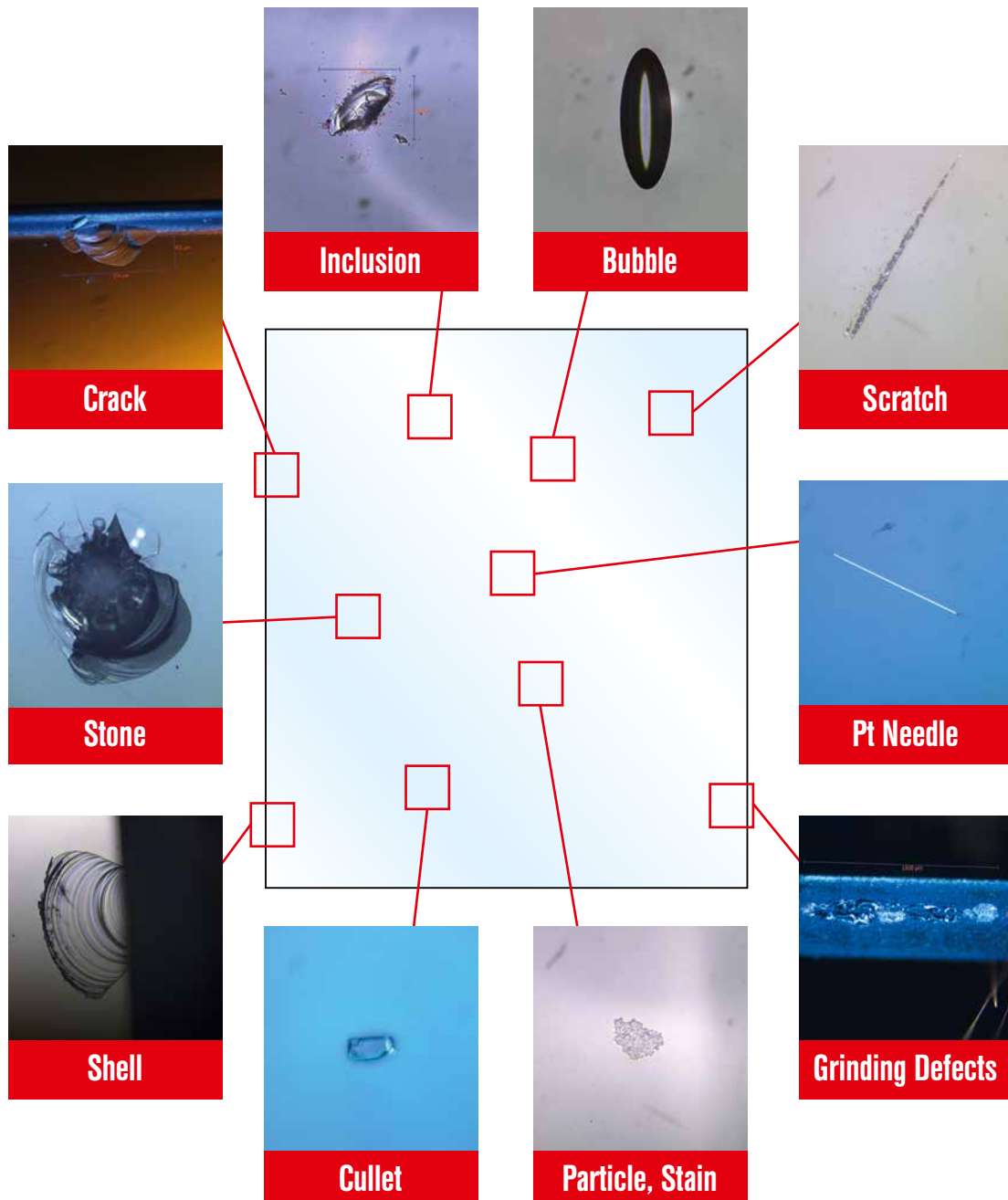
The FLAT PANEL MASTER family is the fully automated modular all-in-one inspection solution for thin display glass. It combines ISRA proven inspection technology with precise conveying for clean room application. Furthermore, it enables the process transparency with user-friendly monitoring and analysis tools. **The result: reduced claims operating costs, increased profitability and improved quality.**

Application

- Touch Panel, TFT, PDP, STN, Super Thin, Flexible Glass, ...
- All Gen sizes
- TCO coated glass

Benefits

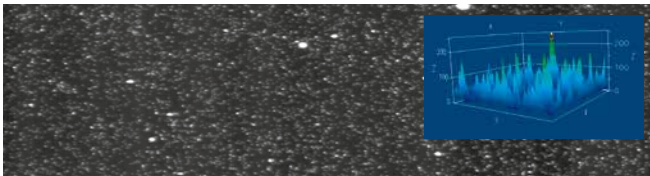
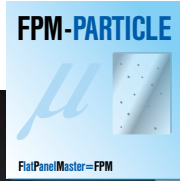
- 3in1 - defect inspection, scratch detection and full surface particle counter
- Reduced costs and maintenance efforts achieved with multi purpose systems and short line length
- Return on investment achieved in the shortest time



The Solution for Display Glass Inspection

to Ensure the Highest Display Glass Quality

Particle Counting



Sub Micron Particles

- Sub micron particle counting
- Top and bottom inspection
- Stand alone or integrated into FPM-Inspect for full size particle counting
- > 99,9 % Classification top side/Bottom side

Defect Inspection



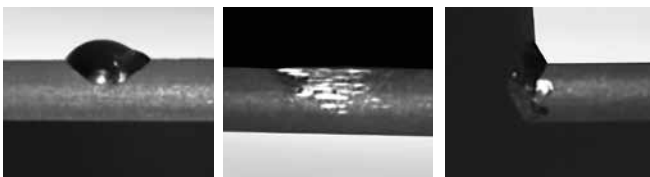
Fine Scratch



Bubble

- Advanced scratch detection up to 15kLux
- Detection of distorting and core defects
- Multiple images/illumination types
- Optical quality measurement

Edge Inspection



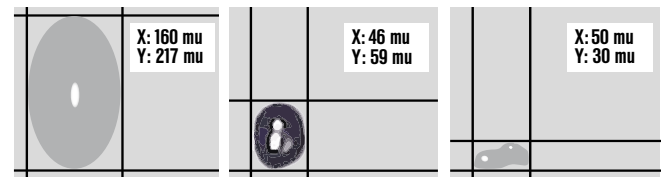
Shell

Grinding Defect

Corner

- 180° View to inspect the complete edge
- Quality control of all 4 edges and corners
- Prevent breakage
- Reliable Classification

Reviewing



Inclusion

Bubble

Platinum

- Precise size information
- Accurate defect depth measurement
- Re-classification of defects
- Large FOV for 100% defect hit rate

Innovations for Automated Optical Inspection

**We are the innovators in optical inspection.
Best practice. Best system. Best service.**

For over three decades, ISRA VISION has become a leading manufacturer of highly accurate automated optical quality inspection systems.

More than 10,000 successful applications reference our sustainable experience in the field of machine vision products – and our ability to innovate.

Today our products are operating worldwide in such industries as glass, plastics, foils, print and automation. It is our goal to set system standards for total process control in these industries.

Customers choose ISRA for the ability to develop products consistently to their requirements. More than 900 employees at 25 locations worldwide are working to contribute to your success.

Your global partner for surface inspection.

We offer our experience and a highly qualified team of experts to design and implement solutions for advanced applications.

We assure that our mission continues beyond our shipping dock. Just challenge our Customer Support and Service Center (CSSC).

We guarantee excellence to our customers – from consulting to service, from tailored solutions to worldwide support. We can make your business more competitive.

**Challenge Us.
Inspect to Control – with ISRA VISION**



Optimize your ROI with the technology leader **ISRA**

Headquarter:
ISRA VISION GmbH
Industriestraße 14, 64297 Darmstadt, Deutschland
Tel: +49 6151 948-0
info@isravisoin.com

www.isravisoin.com

