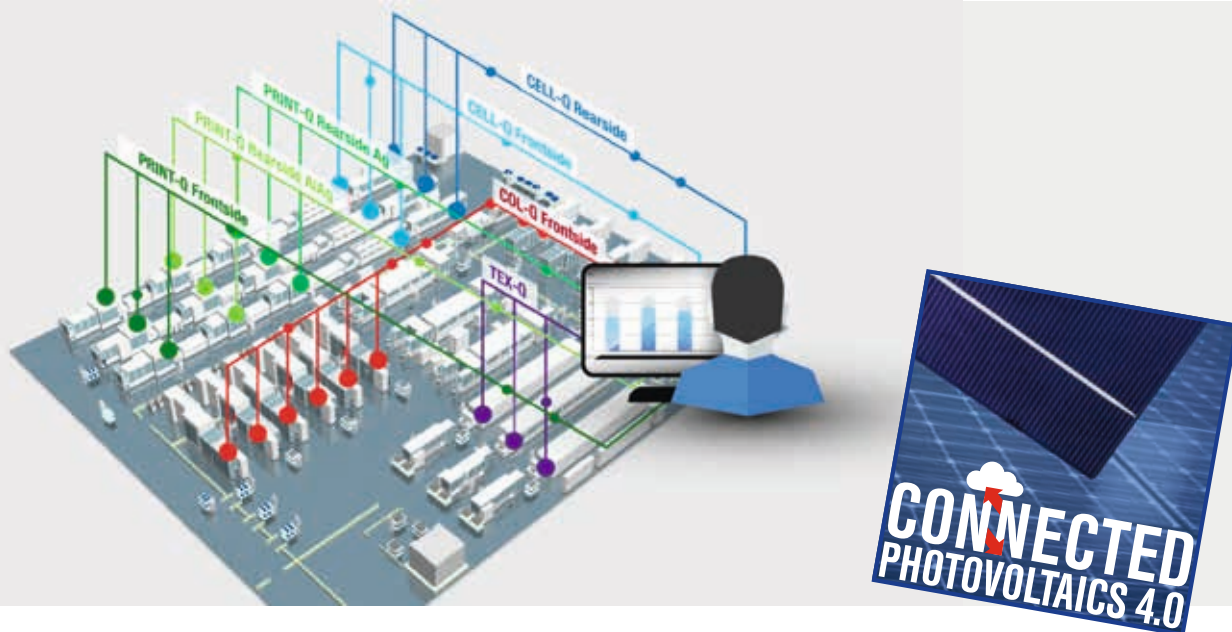


Efficient Recipe Management: Central Recipe Tool

The Key for Higher Productivity and Consistent Quality Standards with Minimum Effort



Requirements & Targets

Same quality standards – everywhere, every time

- Multiple inspection systems perform identical inspection tasks on different production lines simultaneously
- All systems use the same recipe for detection and classification, changes to the central recipe are applied to all systems

System Application

Efficient management of systems in multiline production environments

- Enforce the use identical inspection recipes in all systems
- Fast roll-out of recipe changes
- Recipe Version Control for ISO 9001 quality management

Inspection Solution

Central Recipe Tool (CRT) for central recipe management

- Server-based software for management of recipes: create or import, edit, and release
- Version management – compare recipe versions and keep track of recipe changes
- Automatic roll-out of recipes to defined system groups, or simply by system type

Benefits for Production

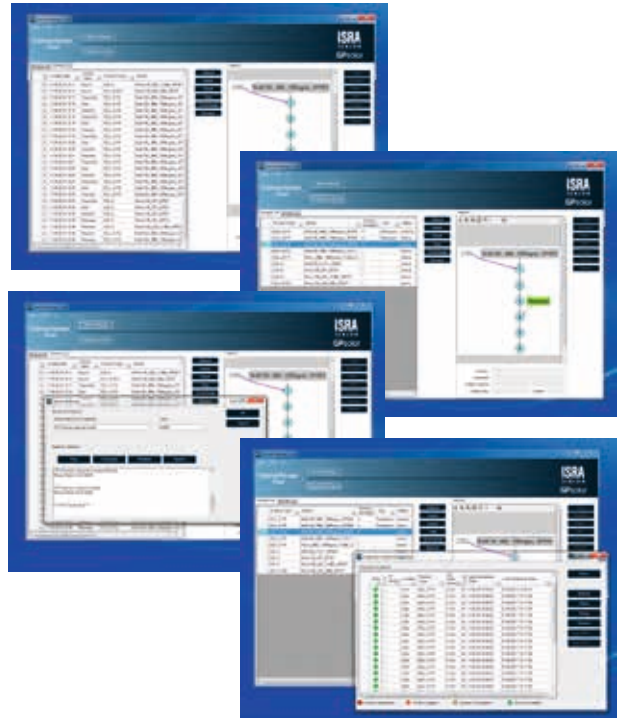
Higher productivity and consistent data for production analysis

- Reduced engineering time for recipe adjustments per line, avoid redundant work
- Using identical recipes in all lines ensures that all systems use the same quality criteria – for cross-line yield loss analysis

Software Features

CRT Server Application	<u>System Requirements:</u> Docker Engine (available for all operation systems), 75 GB Hard drive, min. 4 GB RAM for Docker Container
CRT Client	Import, create, checkout/ check-in, compare, export, (de)activate and release recipes for use in production <u>System Requirements:</u> Windows 7 or higher, optional installed GP Suite or Offline Recipe Manager

Application Examples



Central Recipe Tool with change log, version control, recipe comparison, and automatic recipe roll-out after release allows centralized management and tracking of all inspection systems.

Discover our inspection and monitoring solutions for the entire PV manufacturing chain:



Optimize your ROI with the technology leader **ISRA VISION**

Headquarter:
ISRA VISION GmbH
Industriestraße 14, 64297 Darmstadt, Germany
Tel: +49 6151 948-0
info@isravisoin.com

www.isravisoin.com

